

12.0 SCIENCE

THE KENYA NATIONAL EXAMINATIONS COUNCIL
Kenya Certificate of Primary Education



507

- SCIENCE -

Nov. 2017 – 1 hour 40 minutes

INSTRUCTIONS TO CANDIDATES (Please read these instructions carefully)

1. You have been given this question booklet and a separate answer sheet. The question booklet contains 50 questions.
2. Do any necessary rough work in this booklet.
3. When you have chosen your answer, mark it on the **ANSWER SHEET**, not in this question booklet.

HOW TO USE THE ANSWER SHEET

4. Use an ordinary pencil.
5. Confirm that the answer sheet that you have been provided with has the following:
YOUR INDEX NUMBER
YOUR NAME
NAME OF YOUR SCHOOL
6. Do not make any marks outside the boxes.
7. Keep the sheet as clean as possible and do not fold it.
8. For each of the questions 1–50, four answers are given. The answers are lettered A, B, C and D. In each case, only **ONE** of the four answers is correct. Choose the correct answer.
9. On the answer sheet, show the correct answer by drawing a **dark line** inside the box in which the letter you have chosen is written.

Example:**In the Question Booklet.**

4. Which one of the following components of blood is involved in clotting after injury?
A. Plasma
B. White blood cells
C. Red blood cells
D. Platelets.

The correct answer is D.

On the answer sheet:

[A] [B] [C] [D] [A] [B] [C] [D] [A] [B] [C] [D] [A] [B] [C] [D]

In the set of boxes numbered 4, the box with the letter D printed in it is marked.

10. Your **dark line MUST** be within the box.
11. For each question **ONLY ONE** box is to be marked in each set of four boxes.

This Question Paper consists of 8 printed pages.



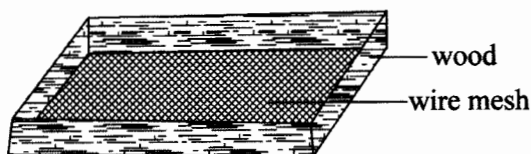
© 2017 The Kenya National Examinations Council

507

57



1. The diagram below shows an equipment used to separate a mixture of solids.



The method of separation in which the equipment is used is

- A. winnowing
B. picking
C. sieving
D. filtration.
2. In which one of the following activities is the tool used properly?
- A. Splitting firewood using a jembe.
B. Cutting wires using a knife.
C. Using a saw to cut wood.
D. Breaking stones using a claw hammer.
3. The heat from a burning charcoal stove reaches the other parts of a room **mainly** by
- A. radiation and conduction;
B. radiation only;
C. radiation and convection;
D. convection only.
4. Which one of the following characteristics is found in **both** tilapia and ducks?
- A. Have scales.
B. Filter feeding.
C. External fertilisation.
D. Breathing under water.
5. Which one of the following statements is **correct** about water?
- A. Filtration makes water safe for drinking.
B. Boiled hard water is safe for drinking.
C. Soft water should not be boiled before drinking.
D. Boiling makes hard water difficult to lather.

6. Which one of the following statements is **TRUE** about HIV and AIDS?

- A. An individual in asymptomatic stage of HIV infection tests negative.
B. A person develops AIDS during the window period of HIV infection.
C. An individual infected with HIV does not necessarily have AIDS.
D. HIV can be spread by mosquito bites.

7. Which one of the following practices conserves water by using sparingly?

- A. Washing cars along the lake shore.
B. Pouring water in the garden after washing fruits.
C. Watering animals in rivers.
D. Carrying out drip irrigation.

8. The following signs and symptoms were observed on a patient:

- (i) Severe headache
(ii) Abdominal pain
(iii) Fever
(iv) Slight diarrhoea with blood stains
(v) Sores in the mouth.

The patient is likely to be suffering from

- A. malaria
B. typhoid
C. cholera
D. bilharzia.

9. Which one of the following attaches itself on the uterus wall to develop into a baby?

- A. Ovum.
B. Foetus.
C. Embryo.
D. Zygote.

10. Which one of the following is **NOT** a reason for HIV testing?

- A. To know the number of people infected.
B. For future planning.
C. To be keen to protect yourself and others.
D. In order to avoid infected individuals.



11. The table below shows the results of an investigation done by pupils on floating and sinking.

STUDENT	OBJECTS THAT SINK	OBJECTS THAT FLOAT
E	Charcoal, pencil	Pin, razor blade
F	Bottle top, stone	Metal dish, plastic plate
G	Nail, piece of glass	Candle wax, plastic bag
H	Wood, wax	Nail, stone

The pupil who recorded the correct results was

- A. E
B. F
C. G
D. H
12. Which one of the following parts of the human digestive system is **correctly** matched to its function?
- | ORGAN | FUNCTION |
|---------------------|--------------------------|
| A. Mouth | Digests proteins. |
| B. Stomach | Secretes digestive juice |
| C. Small intestines | Absorbs water |
| D. Large intestines | Stores digested food |
13. The diagram below shows a certain animal parasite.



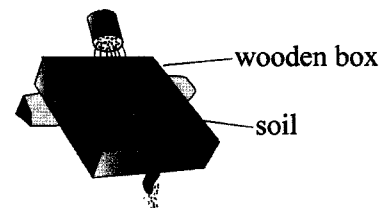
The parasite belongs to the same group as

- A. Tapeworm and liver fluke;
B. Roundworm and flea;
C. Tsetse fly and tapeworm;
D. Flea and tsetse fly.

14. Which of the following is NOT advisable for a patient suffering from tuberculosis?

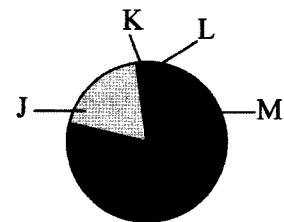
- A. Ventilated housing.
B. Vaccination against the disease.
C. Isolation from healthy people.
D. Early treatment with antibiotics.

15. The diagram below demonstrates an experiment done by pupils to show a certain type of soil erosion.



The type of soil erosion demonstrated by the pupils was

- A. splash erosion
B. gully erosion
C. rill erosion
D. sheet erosion.
16. Which one of the following pairs of plants stores food in the root?
- A. Carrots and irish potatoes.
B. Irish potatoes and sweet potatoes.
C. Sweet potatoes and cassava.
D. Cassava and onions.
17. The diagram below represents the proportion of gases in air.

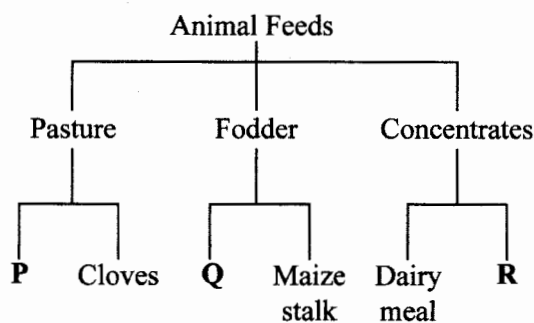


Which proportion represents the gas used in seed germination?

- A. J
B. K
C. L
D. M



18. Which one of the following nutritional deficiency diseases makes the face and limbs of a child to swell?
- Anaemia.
 - Marasmus.
 - Rickets.
 - Kwashiorkor.
19. Which one of the following pairs consists **only** of sources of electricity?
- Wind driven turbine and electric water heater.
 - Electric water heater and generator.
 - Generator and electric iron box.
 - Bicycle dynamo and wind driven turbine.
20. Which one of the following levers has the effort between the fulcrum and the load when in use?
- Wheelbarrow.
 - Spade.
 - Crowbar.
 - Claw hammer.
21. The chart below shows a simple classification of animal feeds.



The feeds labelled **P**, **Q** and **R** can be best represented by

- | P | Q | R |
|-------------------------|--------------|-------------|
| A. Lucerne | Napier grass | Chick mash |
| B. Desmodium | Calf pellets | Salt licks |
| C. Sweet potatoes vines | Sorghum | Hay |
| D. Lucerne | Desmodium | Layers mash |

22. A plant has the adaptations below:

- thin cuticle
- flexible stems
- air sacs
- waxy upper leaf surface.

The plant is likely to be a

- cactus.
 - water lily.
 - sorghum.
 - bean.
23. Pupils put garden soil in a glass bottle containing water, shook it and allowed it to settle. Which one of the following could **NOT** be determined by the experiment?
- Presence of air.
 - Presence of organic matter.
 - Presence of inorganic matter.
 - Sizes of different soil particles.
24. Which one of the following is a function of fibre in the human diet?
- Helps in food digestion.
 - Helps in the absorption of digested food.
 - Prevents diarrhoea.
 - Removal of undigested materials.
25. Which one of the following pairs consists **only** of green plants.
- Moss and fern.
 - Toadstool and moss.
 - Algae and mould.
 - Mould and fern.



26. The following are parts of a flower

- (i) anther.
- (ii) style.
- (iii) ovary.
- (iv) stigma.

Which pair of the plant parts is involved in pollination?

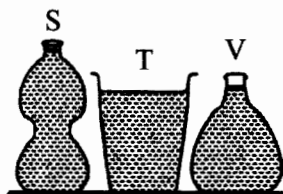
- A. (i) and (iii)
 - B. (ii) and (iii)
 - C. (iii) and (iv)
 - D. (i) and (iv)
27. In an investigation, pupils placed a mirror in a basin containing water to direct light to a white wall. The pupils were investigating

- A. how light travels.
- B. reflection.
- C. refraction.
- D. making of a rainbow.

28. Which one of the following groups of materials consists only of non-magnetic materials.

- A. Nickel, aluminium, copper.
- B. Plastic, copper, aluminium.
- C. Paper, iron, glass.
- D. Staples, coal, iron.

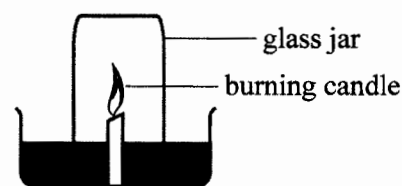
29. During an experiment pupils poured a certain amount of water into a container labelled S. They then transferred the same water into the containers labelled T and V.



The pupils were investigating whether liquids

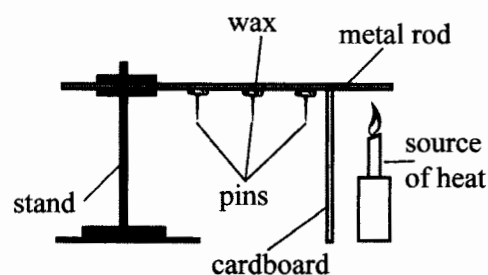
- A. have definite shape.
- B. have definite volume.
- C. occupy space.
- D. exert same pressure.

30. Pupils set up an experiment as shown in the diagram below.



Which one of the following was a correct observation from the experiment?

- A. Water level in the trough increased.
 - B. Candle flame brightened.
 - C. Water level in the jar increased.
 - D. Colour of the water changed.
31. The diagram below represents a set-up used to demonstrate certain aspects of matter.



The pin next to the candle fell off as a result of

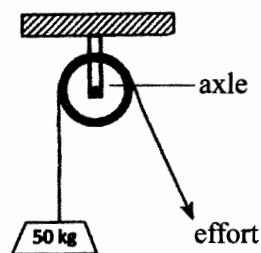
- A. conduction and radiation.
 - B. radiation only.
 - C. convection and conduction.
 - D. conduction only.
32. Which one of the following components of the environment will be least affected when an oil pipe bursts?
- A. Air.
 - B. Water.
 - C. Soil.
 - D. Plants.



33. Pupils placed a bottle top on water and it floated. They then crushed and placed the same bottle top on the water again and it sunk.

Which one of the following factors that affect sinking and floating was being investigated?

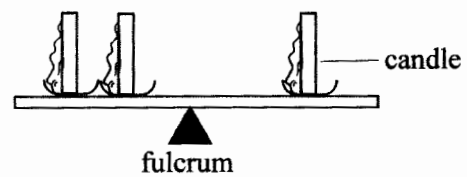
- A. Size of the material.
 - B. Type of the material.
 - C. Shape of the material.
 - D. Mass of the material.
34. The diagram below represents a single fixed pulley in use.



Which one of the following is NOT true about the pulley?

- A. It reduces the effort applied.
- B. Effort and load move through equal distances.
- C. Makes work easier by changing direction of effort.
- D. The wheel reduces friction.

35. The diagram below balancing against one.



If all the candles were lit at the same time, which one of the following is a correct observation made in the experiment?

- A. The two candles were displaced upwards.
 - B. The single candle was displaced upwards.
 - C. There was no change in the set up.
 - D. The see-saw will swing towards both sides.
36. Which one of the following methods of food preservation is NOT modern?
- A. Canning.
 - B. Drying.
 - C. Use of honey.
 - D. Refrigeration.
37. Which type of manure is common on dairy farms?
- A. Green manure.
 - B. Compost manure.
 - C. Farmyard manure.
 - D. Organic mulches.
38. During digestion, the following activities occur in the mouth EXCEPT
- A. mechanical breakdown of food.
 - B. secretion of digestive juice.
 - C. killing of germs.
 - D. rolling of food into bolus.
39. Which one of the following pairs of diseases is the infant immunised against at birth?
- A. Tuberculosis and polio.
 - B. Polio and diphtheria.
 - C. Diphtheria and yellow fever.
 - D. Tuberculosis and yellow fever.



40. Which one of the following teeth problems can be prevented by feeding on a balanced diet?

- A. Bleeding gums.
- B. Dental cavities.
- C. Bad smell.
- D. Tooth decay.

41. Which one of the following plants is a cash crop?

- A. Sunflower.
- B. Irish potato.
- C. Wheat.
- D. Pineapple.

42. The chart below shows a weather record kept by pupils for five days.

DAY	MORNING	AFTERNOON
Monday		
Tuesday		
Wednesday		
Thursday		
Friday		

KEY	Sunny	Calm
	Rainy	
	Cloudy	

From the chart, whenever it was

- A. sunny in the morning, it rained in the afternoon.
- B. cloudy in the morning, it was sunny in the afternoon.
- C. calm in the morning, it was windy in the afternoon.
- D. windy in the morning, it was calm in the afternoon.

43. Below is an illustration of a food chain.

Plant → Antelope → Lion → Vulture

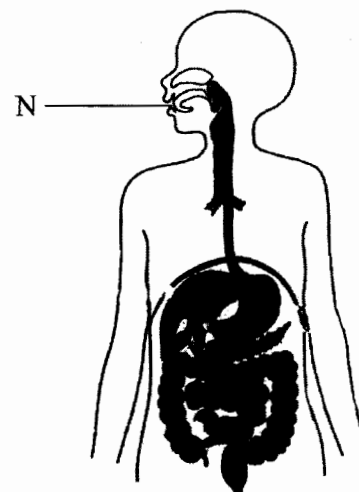
Tertiary consumers are represented by

- A. plants.
- B. antelope.
- C. lion.
- D. vulture.

44. Which one of the following planets is closer to the sun?

- A. Jupiter.
- B. Venus.
- C. Earth.
- D. Mars.

45. The diagram below shows the human digestive system.



The juice produced at the part labelled N is used to digest

- A. carbohydrates.
- B. proteins.
- C. fats and oils.
- D. mineral salts.

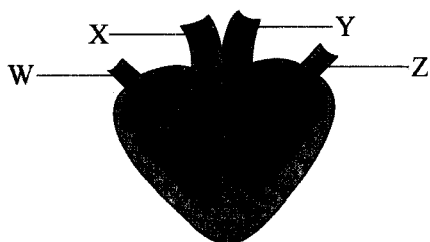
46. The table below shows the type and number of teeth in an adult human being.

TYPE OF TEETH	TOTAL NUMBER IN BOTH JAWS
E	4
Molars	G
F	8
Incisors	H

Which one of the following correctly represents E, F, G and H?

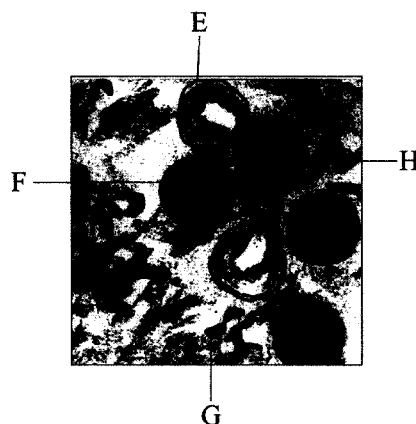
	E	F	G	H
A	Premolar	Canine	12	4
B	Canine	Premolar	4	12
C	Premolar	Canine	4	8
D	Canine	Premolar	12	8

47. The diagram below represents a mammalian heart.



In which pair of blood vessels is blood under **highest** pressure?

- A. W and X.
 B. X and Y.
 C. Y and Z.
 D. W and Z.
48. The diagram below shows components of human blood.



The component that stops the bleeding of a wound is _____.

- A. E
 B. F
 C. G
 D. H
49. Which one of the following is NOT an excretory product in human beings?
- A. Urine.
 B. Faeces.
 C. Sweat.
 D. Carbon dioxide.
50. Which one of the following is a function of the amniotic sac during pregnancy?
- A. Passes digested food to the foetus.
 B. Allows gaseous exchange between the mother and foetus.
 C. Prevents harmful micro-organisms from reaching the foetus.
 D. Protects the foetus from physical shock.

